

CG TOWERS

Ideal for supporting Communications, Civil and Amateur Antennas

Twelve models are available in heights from 62 ft. (8 sections) up to 147 ft. (19 sections) plus mast.

Towers are designed to support a net antenna weight of up to 80 lbs. with a horizontal wind load of up to 300 lbs. plus rotor and 2" O.D. x 10 ft. mast.

Instructions are supplied for 30 degree guying with ground anchors 120 degrees apart and about 1/2 tower height from base.

Hard Grade 1/4" O.D. guy wire is recommended.

Our new Towers have been enhanced in both leg profile and taper facilitating an easier installation and improved tower structure.

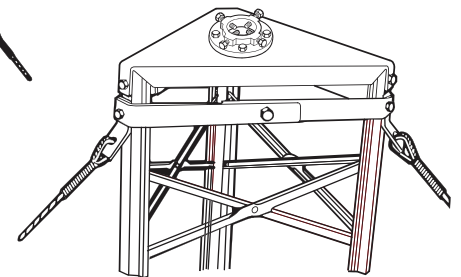
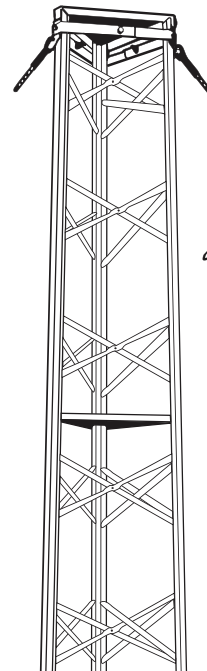
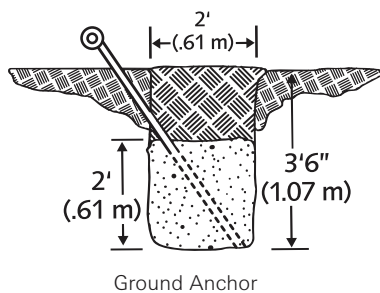
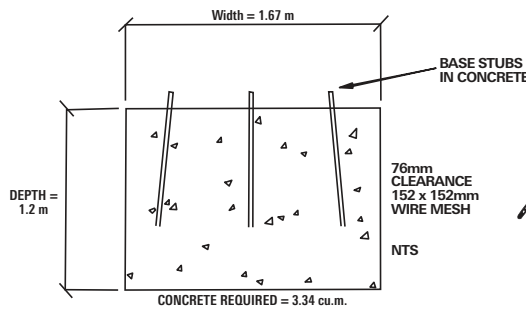
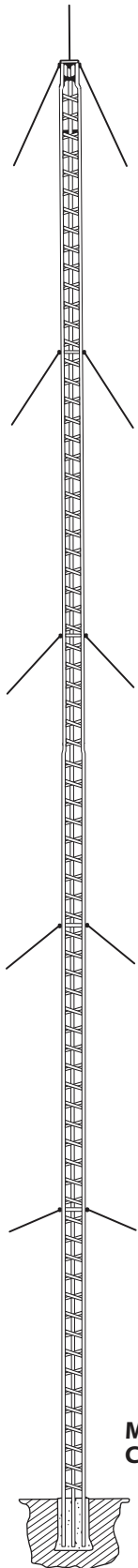
All tower sections are eight feet long with twist reducing beaded-channel legs together with "X" braces. Legs and cross braces are galvanized steel, rivets are solid aluminum, anodized. Special nuts and bolts are 1/2" O.D. and heat treated.

DMX-04T and DMX-04 sections are 19" wide and have 16 ga. legs. DMX-05 and DMX-05S sections are 21 1/2" wide with 14 ga. legs.

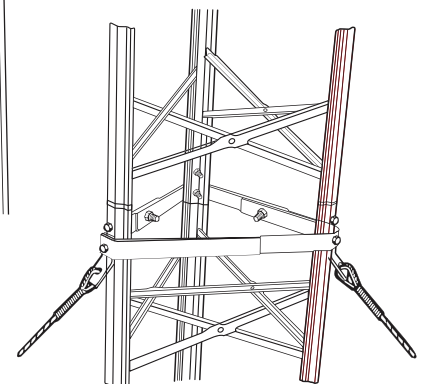
Straight sections fit smoothly together, since all leg bottoms are accurately swaged for a perfect fit.

The three highest towers use tapered sections at the base.

Special three-size guy stations are strong and reliable. They are attached every three sections from the base up (except CG-19N) and at the top of the tower.

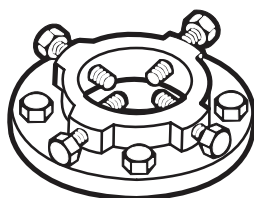


Top section with top plate, cast aluminum mast clamp and rotor plate.

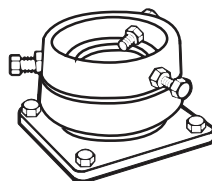


Guy Station where sections join.

Model CG-15N



244A
Cast Aluminum Mast Clamp



BBMB
Ball Bearing Mast bearing

CAUTION NOTICE

Please read carefully

Our published installation guidelines are for standard towers and mounting devices as specified. These guidelines are based on assumed soil conditions (190 KPA or 4000 PSF) that may or may not exist in your area and on the assumption that no damage has occurred, or modifications are made to the tower or mounting device.

A qualified structural engineer should be consulted prior to installing any tower or supporting structure.



WARNING!

Survey your installation site **NOW** to prevent your antenna or support from coming in contact with overhead powerlines. Caution should be used when climbing towers and support structures.

FAILURE TO EXERCISE CAUTION MAY RESULT IN SERIOUS INJURY OR DEATH.