

Delhi

DELHI LIGHTING TOWER PRODUCTS

LT SERIES

Lighting towers are available in the following four series. Load figures given are for lights mounted at the top of the tower, and include the weight of mast and fittings. Each series designates the load carrying capabilities and maximum height. Our new Towers have been enhanced in both leg profile and taper facilitating an easier installation and improved tower structure.

NOTE: All ballasts should be mounted at base of tower.

| Model | Series No. | Max. Height | Max. Load |
|-------|------------|-------------|---|
| LT | 1 | 64' | 3 sq. ft. projected area - 60 lbs of weight |
| LT | 2 | 56' | 6 sq. ft. projected area - 120 lbs of weight |
| LT | 3 | 48' | 9 sq. ft. projected area - 180 lbs of weight |
| LT | 4 | 40' | 12 sq. ft. projected area - 240 lbs of weight |

For Parks and Recreational Areas, Farms, Industry, Parking Lots, and many other applications.

CONSTRUCTION

Towers are manufactured in 8 ft. sections, which nest compactly for shipping and ease of handling and storage. Rivets are stainless steel and all bolts, nuts and lockwashers are heat treated and zinc plated.

TOP SECTIONS

The top section of each tower comes complete with 2 heavy gauge galvanized mast clamp plates. Each plate has a heavy duty cast aluminum mast clamp that will accept masts up to 2 1/2" O.D. (see figure below)

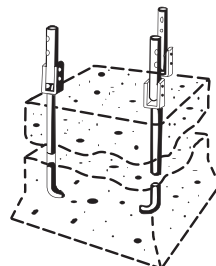
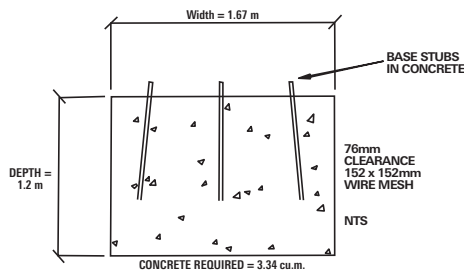
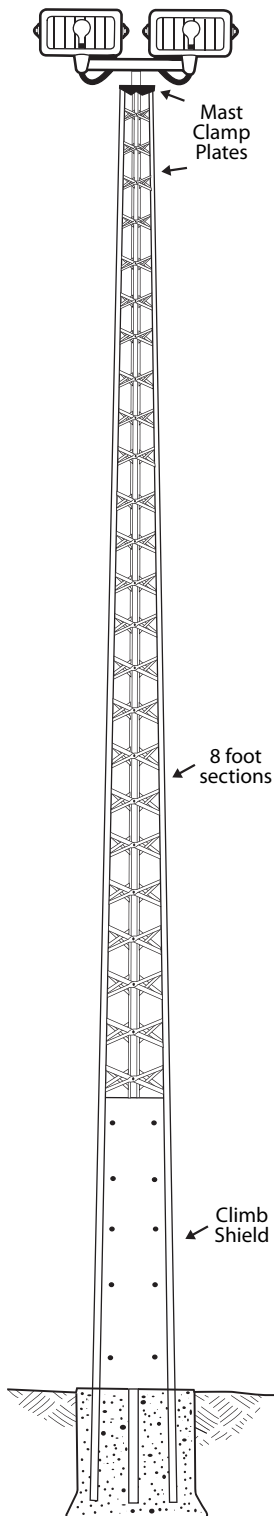
BASES - CONCRETE

Each tower is shipped with 3 concrete-base stubs. It is recommended that a square hole be dug 4 feet deep and 16" wider than the base section of the tower. Hinge-up base stubs are also available for use in concrete. These are recommended where facilities are available for raising or lowering complete tower. On parking lot installations, all concrete bases should extend past bumper height.

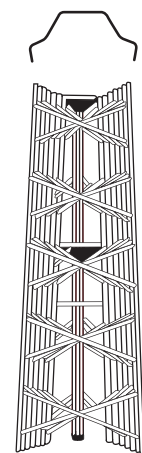
CLIMB SHIELDS

(Also used to enclose ballasts)
Shields are manufactured from galvanized sheet and are fastened to the braces with sheet metal screw. Shields are 8 feet high.

- A** 26" Sections 01T, 02T
- B** 41" Sections 03T, 04T

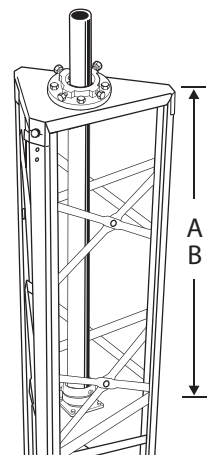


Hinge-up Base



Compact Tower Package

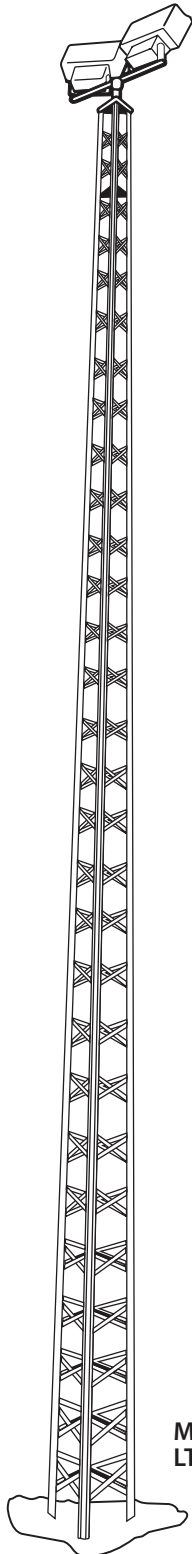
Unique beaded channel leg resists bending



Top of tower with mast clamp plate installed

LT SERIES

LT Series Towers are shipped complete with 8 foot tower sections, 2 mast clamp plates installed in top section, 3 cement base stubs, plus special bolts, nuts and washers.



Model
LT-3-48N

| MODEL | HEIGHT | SECTIONS SUPPLIED | WEIGHT (LBS) |
|----------|--------|---|--------------|
| LT-1-24N | 24' | LTX-01T, LTX-02, LTX-03 | 86 |
| LT-1-32N | 32' | LTX-01T, LTX-02, LTX-03, LTX-04 | 118 |
| LT-1-40N | 40' | LTX-01T, LTX-02, LTX-03, LTX-04, LTX-05 | 165 |
| LT-1-48N | 48' | LTX-01T, LTX-02, LTX-03, LTX-04, LTX-05, LTX-06 | 223 |
| LT-1-56N | 56' | LTX-01T, LTX-02, LTX-03, LTX-04, LTX-05, LTX-06, LTX-07 | 291 |
| LT-1-64N | 64' | LTX-01T, LTX-02, LTX-03, LTX-04, LTX-05, LTX-06, LTX-07, LTX-08 | 359 |
| LT-2-24N | 24' | LTX-02T, LTX-03, LTX-04 | 97 |
| LT-2-32N | 32' | LTX-02T, LTX-03, LTX-04, LTX-05 | 144 |
| LT-2-40N | 40' | LTX-02T, LTX-03, LTX-04, LTX-05, LTX-06 | 202 |
| LT-2-48N | 48' | LTX-02T, LTX-03, LTX-04, LTX-05, LTX-06, LTX-07 | 270 |
| LT-2-56N | 56' | LTX-02T, LTX-03, LTX-04, LTX-05, LTX-06, LTX-07, LTX-08 | 338 |
| LT-3-24N | 24' | LTX-03T, LTX-04, LTX-05 | 124 |
| LT-3-32N | 32' | LTX-03T, LTX-04, LTX-05, LTX-06 | 182 |
| LT-3-40N | 40' | LTX-03T, LTX-04, LTX-05, LTX-06, LTX-07 | 250 |
| LT-3-48N | 48' | LTX-03T, LTX-04, LTX-05, LTX-06, LTX-07, LTX-08 | 318 |
| LT-4-24N | 24' | LTX-04T, LTX-05, LTX-06 | 158 |
| LT-4-32N | 32' | LTX-04T, LTX-05, LTX-06, LTX-07 | 226 |
| LT-4-40N | 40' | LTX-04T, LTX-05, LTX-06, LTX-07, LTX-08 | 294 |

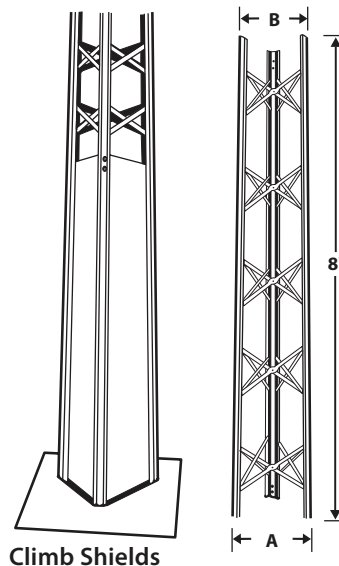
SPECIFICATIONS OF SECTIONS

| SECTION NO. | LEG GAUGE | CROSS BRACE GAUGE | "A" (IN.) | "B" (IN.) | RIVET DIA (IN.) | WEIGHT IN LBS |
|-------------|-----------|-------------------|-----------|-----------|-----------------|---------------|
| LTX-01T | 16 | 18 | 12 1/2 | 10 | 3/16 | 26 |
| LTX-02 | 16 | 18 | 14 3/4 | 12 3/4 | 3/16 | 23 |
| LTX-02T | 16 | 18 | 14 3/4 | 12 3/4 | 3/16 | 28 |
| LTX-03 | 16 | 18 | 17 | 15 | 3/16 | 26 |
| LTX-03T | 16 | 18 | 17 | 15 | 3/16 | 34 |
| LTX-04 | 16 | 16 | 19 1/2 | 17 1/2 | 3/16 | 31 |
| LTX-04T | 16 | 16 | 19 1/2 | 17 1/2 | 3/16 | 41 |
| LTX-05 | 14 | 14 | 22 | 19 3/4 | 3/16 | 46 |
| LTX-06 | 13 | 14 | 24 3/8 | 22 3/8 | 3/16 | 55 |
| LTX-07 | 12 | 14 | 26 7/8 | 24 3/4 | 1/4 | 63 |
| LTX-08 | 12 | 14 | 29 3/8 | 27 1/4 | 1/4 | 68 |

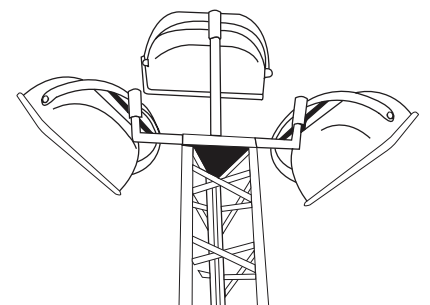
ACCESSORIES

| MODEL | HINGE - UP BASE FOR CONCRETE |
|----------------------|---------------------------------|
| HUB 3-6 | Fit sections LTX-03 thru LTX-06 |
| HUB 7-8 | Fit sections LTX-07 and LTX-08 |
| CLIMB SHIELDS | |
| CS-3 | to fit LTX-03 section |
| CS-4 | to fit LTX-04 section |
| CS-5 | to fit LTX-05 section |
| CS-6 | to fit LTX-06 section |
| CS-7 | to fit LTX-07 section |
| CS-8 | to fit LTX-08 section |

Section numbers ending in "T" are top sections which have 2 mast clamp plates installed.



Climb Shields



Installing three lights on a Model LT-4-40N tower

CAUTION NOTICE

Please read carefully

Our published installation guidelines are for standard towers and mounting devices as specified. These guidelines are based on assumed soil conditions (190 KPA or 4000 PSF) that may or may not exist in your area and on the assumption that no damage has occurred, or modifications are made to the tower or mounting device.

A qualified structural engineer should be consulted prior to installing any tower or supporting structure.



WARNING!

Survey your installation site **NOW** to prevent your antenna or support from coming in contact with overhead powerlines. Caution should be used when climbing towers and support structures.

FAILURE TO EXERCISE CAUTION MAY RESULT IN SERIOUS INJURY OR DEATH.